

(1) FORE-END & MIDDLE



Candy wrapped boneless collars

(2) SHOULDER

Lacone

(3) BELLY



Belly, single ribbed, wrindless belly square cut



Bone in rind on belly

(4) RIBS



Loin ribs, wide cuts



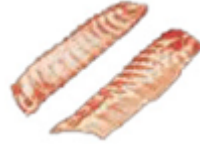
Belly's soft bone



Spare ribs



Meaty ribblets



Loin ribs narrow cuts

(5) OFFALS and BONES



Hind feet



Front feet

Head meat

Pork diaphragm

Outside skirt meat

Small intestine

Jowl meat

Jowl steak

And more...

모든 정보는 프랑스 축산 및 유가공 사무국
(OFFICE DE L' ELEVAGE)에서 찾아보실 수 있습니다.

[영문 사이트](#) →

http://www.sncp.fr/v2/EN/club_export/pdt_fr_pieces.php

[한국어 사이트](#) →

http://www.sncp.fr/v2/CO/club_export/pdt_fr_pieces.php