

Category	A	
Weight	≤ 7 kg	
Quality	1	2
Meat colour	Clear pink	Other colour or other fat level
Fat class*	(2) (3)	

Category	B	
Weight	7.1 to 10 kg	
Quality	1	2
Meat colour	Clear pink or pink	Other colour or other fat level
Fat class*	(2) (3)	

Category	C	
Weight	10.1 to 13 kg	
Quality	1	2
Meat colour	Clear pink or pink	Other colour or other fat level
Fat class*	(2) (3)	

Community scale for the classification of carcasses of light lambs

Carcasses of light lambs are classified by

- (i) three categories of weight;
- (ii) two qualities in each category assessed by:
 - meat colour
 - fat class.

Meat colour is determined on the flank at the *rectus abdominis*.

The photographs for the different fat classes relate to carcasses in the middle of the class.

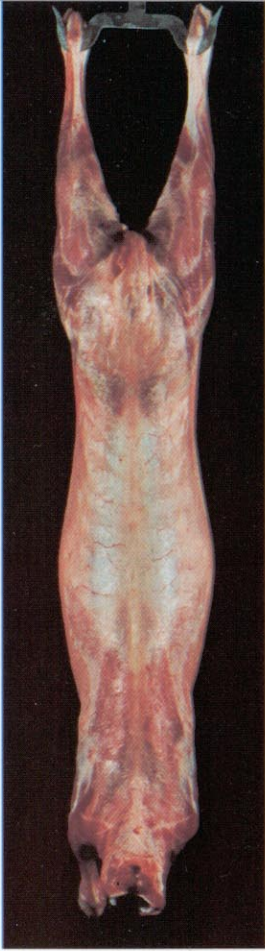
Price (excluding VAT) in Luxembourg: ECU 0.50



OFFICE FOR OFFICIAL PUBLICATIONS
OF THE EUROPEAN COMMUNITIES
L-2985 Luxembourg

Regulation (EEC) No 2137/92
Regulation (EEC) No 461/93

1



Low

None up to low fat cover

External – Traces of or no fat visible

Internal –

Thoracic: Traces of or no fat visible between the ribs

2



Slight

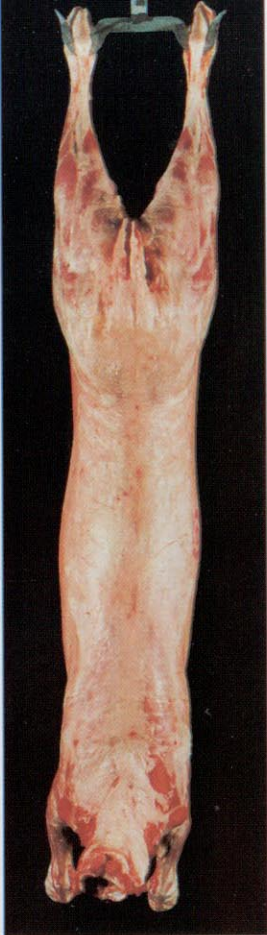
Slight fat cover; flesh visible almost everywhere

External – A slight layer of fat covers part of the carcass but may be less evident on the limbs

Internal –

Thoracic: Muscle clearly visible between the ribs

3



Average

Flesh, with the exception of the hindquarter and shoulder, almost everywhere covered with fat; slight deposits of fat in the thoracic cavity

External – A slight layer of fat covering most or all of the carcass; slightly thickened fat zones at the base of the tail

Internal –

Thoracic: Muscle still visible between the ribs

4



High

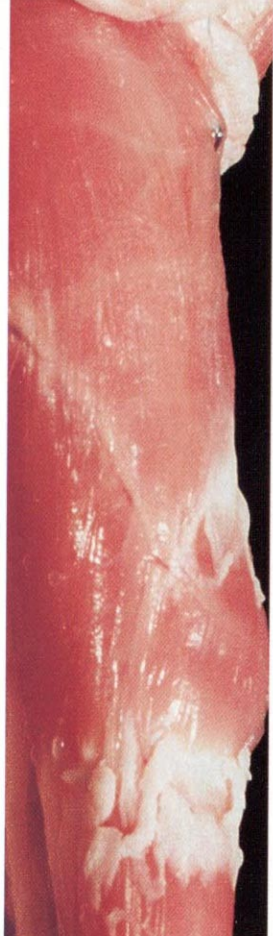
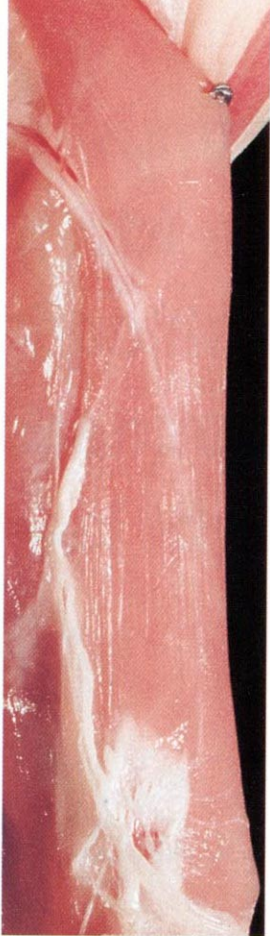
Flesh covered with fat, but on the hindquarter and shoulder still partly visible; some distinctive fat deposits in the thoracic cavity

External – A thick layer of fat covering most or all of the carcass but may be thinner on limbs and thickening on shoulders

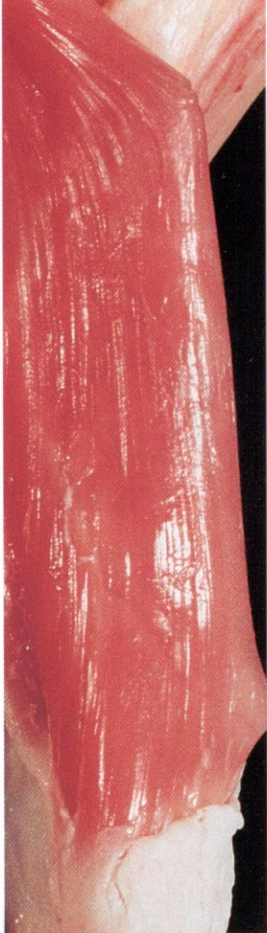
Internal –

Thoracic: Muscle between the ribs may be infiltrated with fat; fat deposits may be visible on the ribs

Clear pink



Pink



**Other
colour**

